



RM

Costruzioni Elettroniche

di Marchioni Davide & Daniele s.n.c.

Via IV Novembre 215/5

Casella postale N° 33

40045 Ponte della Venturina (BO) ITALY

Tel +39 0534 60460

Fax +39 0534 60463

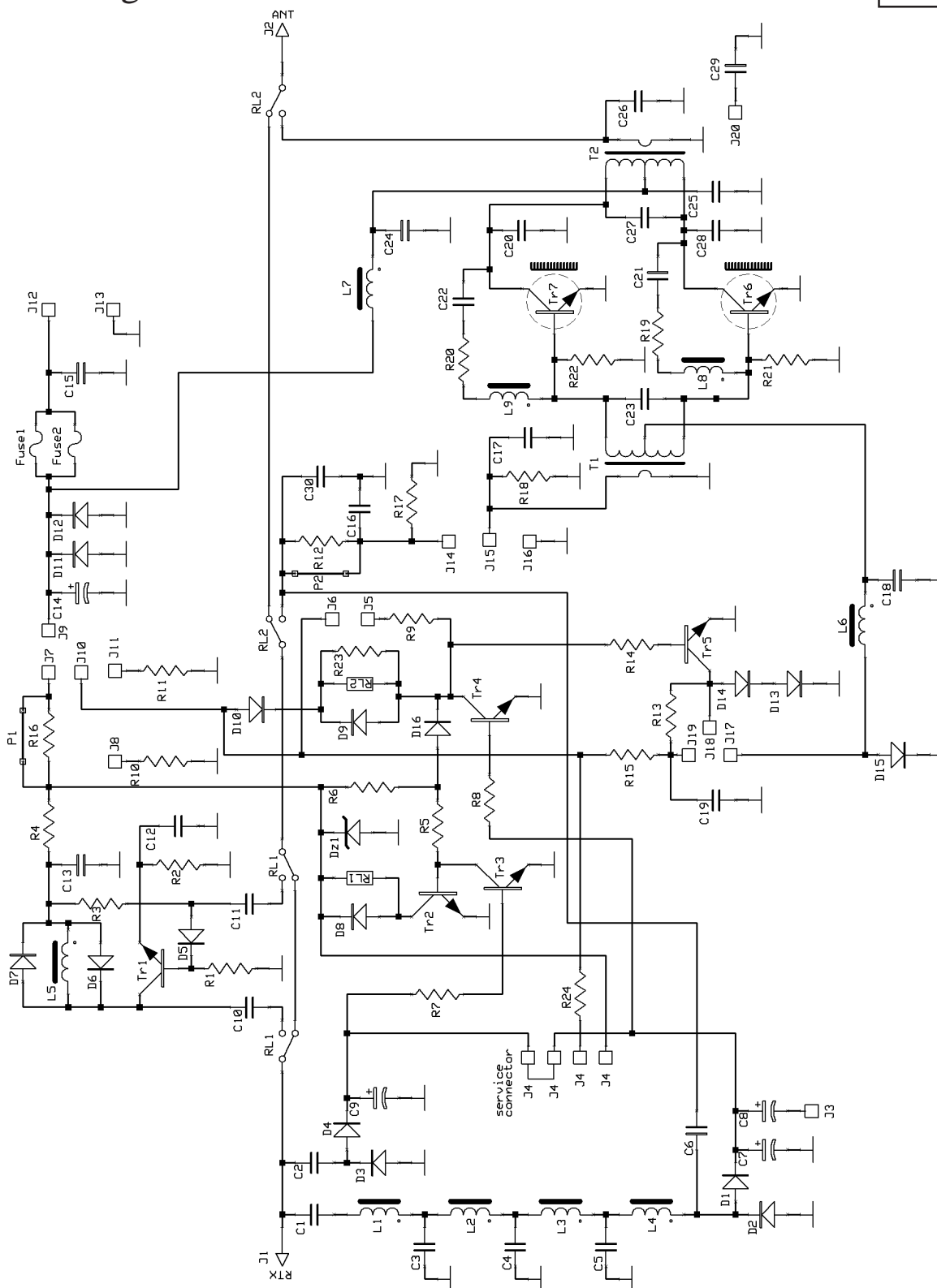
E-MAIL ufftec@rmitaly.com

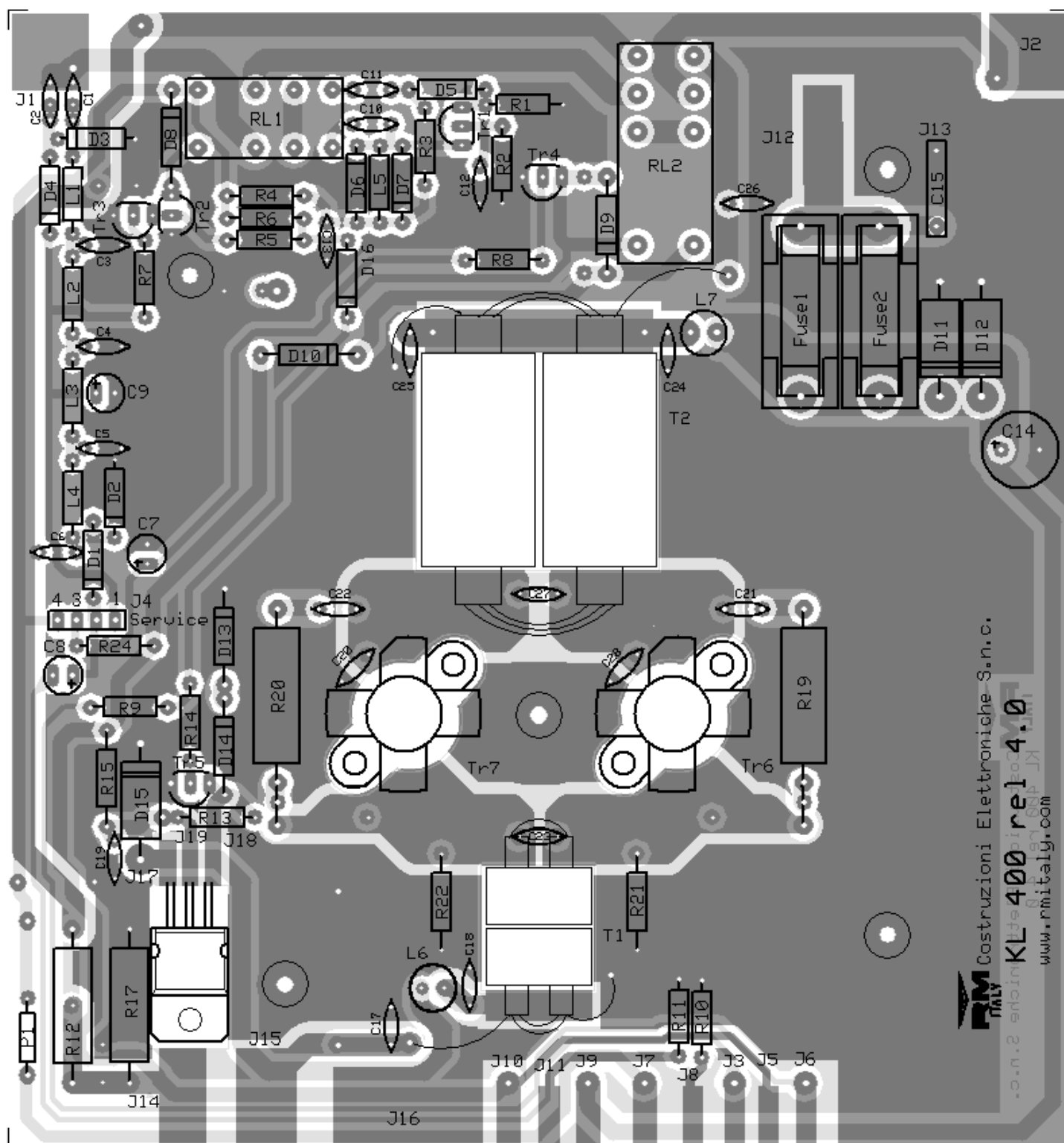
<http://www.rmitaly.com>

Mod. KL 400 linear amplifier

Schematic diagram

Version 4.00





RM Costruzioni Elettroniche S.n.c.
 .c.n.2 ancin KL 400 rel 4.0
 www.rmitaly.com

List of components

C ₁	= 3,3 pF	50 V	NP0
C ₂	= 8,2 pF	50 V	NP0
C ₃	= 82 pF	50 V	NP0
C ₄	= 100 pF	50 V	NP0
C ₅	= 100 pF	50 V	NP0
C ₆	= 5,6 pF	50 V	NP0
C ₇	= 2,2 µF	16 V	

C ₈	= 33 µF	16 V	
C ₉	= 10 µF	16 V	
C ₁₀	= 150 pF	50 V	NP0
C ₁₁	= 56 pF	50 V	NP0
C ₁₂	= 470 pF	50 V	N750
C ₁₃	= 10 nF	50 V	
C ₁₄	= 470 µF	25V	
C ₁₅	= 470 nF	100 V	Polyester

C ₁₇ = 180 pF	50 V	NP0	Tr ₃ = BC 547
C ₁₈ = 10 nF	50 V		Tr ₄ = BC 547
C ₁₉ = 100 nF	50 V		Tr ₅ = BC 547
C ₂₀ = 220 pF	500 V	N750	Tr ₆ = SD 1446
C ₂₁ = 47 nF	50 V		Tr ₇ = SD 1446
C ₂₂ = 47 nF	50 V		L ₁ = 2,2 µH
C ₂₄ = 100 nF	50 V		L ₂ = 2,2 µH
C ₂₅ = 100 nF	50 V		L ₃ = 2,2 µH
C ₂₆ = 47 pF	1000 V	NP0	L ₄ = 2,2 µH
C ₂₇ = 1300 pF	500 V	Silvered mica	L ₅ = 10 µH
C ₂₈ = 220 pF	500 V	N750	L ₆ = VK 200 1 wire
R ₁ = 2,2 KΩ	¼W		L ₇ = VK 200 2 wires
R ₂ = 100 Ω	¼W		Rl ₁ = Relè 12 V 30229012
R ₃ = 12 KΩ	¼W		Rl ₂ = Relè 12 V 41529012
R ₄ = 100 Ω	¼W		Fuse = 2 x 12A 5x20 Fast
R ₅ = 4,7 KΩ	¼W		T ₁ = Input transformer
R ₆ = 4,7 KΩ	¼W		T ₂ = Output transformer
R ₇ = 2,2 KΩ	¼W		
R ₈ = 2,2 KΩ	¼W		
R ₉ = 1,0 KΩ	¼W		
R ₁₀ = 1,0 KΩ	¼W		
R ₁₁ = 1,0 KΩ	¼W		
R ₁₂ = 15 Ω	2W		
R ₁₃ = 1,2 KΩ	¼W		
R ₁₄ = 12 KΩ	¼W		
R ₁₅ = 1,0 Ω	½W		
R ₁₇ = 180 Ω	2W		
R ₁₉ = 68 Ω	2W		
R ₂₀ = 68 Ω	2W		
R ₂₁ = 10 Ω	½W		
R ₂₂ = 10 Ω	½W		
R ₂₄ = 2,2 KΩ	¼W		
D ₁ = 1N4148			
D ₂ = 1N4148			
D ₃ = 1N4148			
D ₄ = 1N4148			
D ₅ = 1N4148			
D ₆ = 1N4148			
D ₇ = 1N4148			
D ₈ = 1N4004			
D ₉ = 1N4004			
D ₁₀ = 1N4004			
D ₁₁ = 1N5400			
D ₁₂ = 1N5400			
D ₁₃ = 1N4004			
D ₁₄ = 1N4004			
D ₁₅ = 1N5400			
D ₁₆ = 1N4148			
Tr ₁ = BF 199			
Tr ₂ = BC 547			